



ExxonMobil Baton Rouge
2016 ECONOMIC IMPACT REPORT

ExxonMobil

Information provided is from a study conducted in 2016 by Economist Dr. Loren Scott



ExxonMobil SUPPORTS our local economy:

**DIRECT
PROPERTY
TAXES PAID
IN EBR PARISH
\$33.2
MILLION**

Or **7.8%**
of ALL PROPERTY
TAXES paid in the
parish in 2015

**DIRECT
SALES
TAXES PAID
\$26.3
MILLION**

**TOTAL
TAXES PAID
IN 2015**
LOUISIANA:
\$153.2 MILLION
EBR PARISH:
\$93.8 MILLION
WBR PARISH:
\$3.9 MILLION

INDIRECT SALES TAXES: Generated
\$34.3 million in sales taxes through its
multiplier effect on the economy

The estimated total of **\$93.8 MILLION** in payments to
parish government is equivalent to the amount EBR
parish collected in sales taxes in the first half of 2015.

The RIPPLE EFFECT of ExxonMobil Baton Rouge translates into...

**E A S T
B A T O N
R O U G E
P A R I S H**

• **\$3.5** **\$1.3**
• **BILLION** **BILLION**
in EBR SALES in EBR EARNINGS

26,822 JOBS
for EBR residents



• **\$4.1** **\$1.6**
• **BILLION** **BILLION**
in STATE SALES in STATE EARNINGS

35,742 JOBS
for LOUISIANA residents

Greater than the total employment in
49 of 64 parishes in Louisiana

1 OUT OF EVERY 8 JOBS
in the Baton Rouge area can be
TRACED BACK TO
ExxonMobil

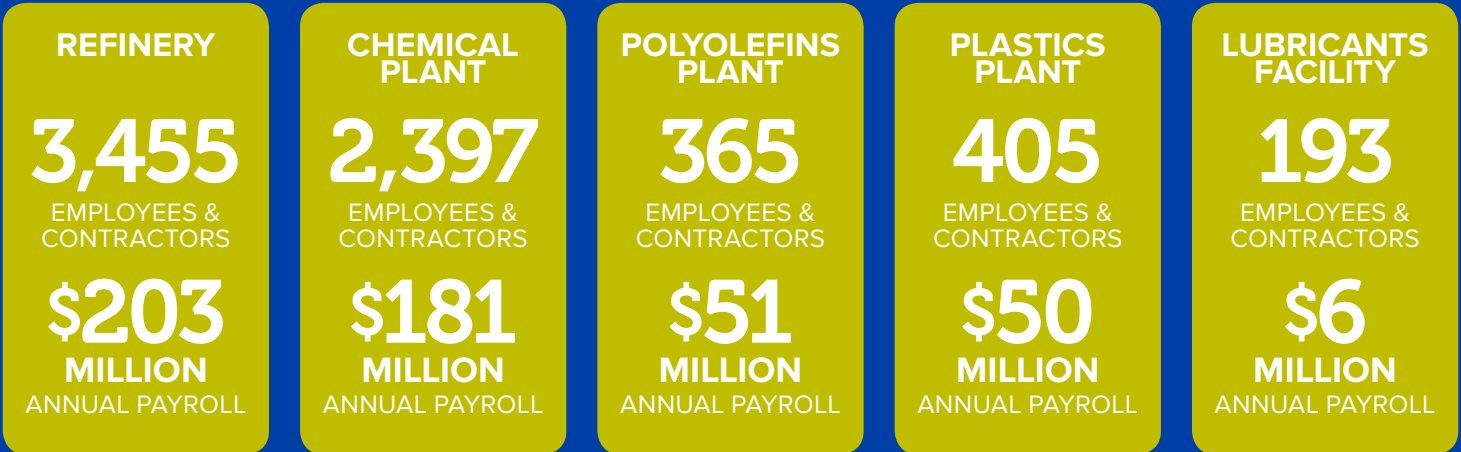
Over the past decade,
ExxonMobil Louisiana
operations have

PAID MORE THAN
\$1 BILLION
IN STATE AND
LOCAL TAXES
after credits and rebates

ANNUALLY,
ExxonMobil pays more than
\$100 MILLION
IN STATE AND
LOCAL TAXES
after credits and rebates

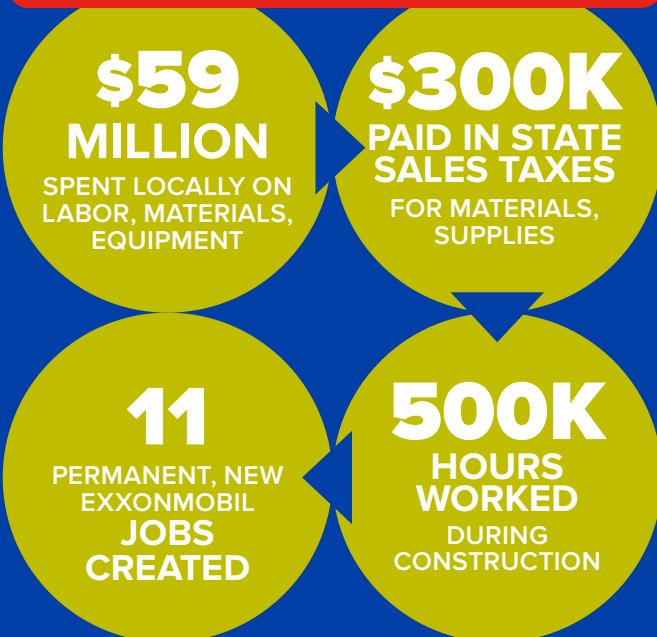
ExxonMobil: INVESTING where it counts

QUALITY JOBS: **6,815** employees & contractors AND
\$491 MILLION in annual payroll in the Baton Rouge area



POWER OF ONE PROJECT

PORT ALLEN AVIATION PROJECT



SULFUR TAIL GAS CLEAN UP UNIT



These projects demonstrate our **COMMITMENT TO FUELING OUR LOCAL ECONOMY** by meeting continued demand for our products and updating our facilities. These investments help improve safety, energy efficiency, environmental performance and reliability.

CAPITAL INVESTMENT in ExxonMobil Baton Rouge facilities alone **AVERAGED ABOUT**

\$1 BILLION

over the past three years, supporting **MORE THAN 4,500 DIRECT CONSTRUCTION JOBS** and supporting an **EMPLOYEE WORKFORCE OF MORE THAN 2,500**

A diversified petrochemical complex in the **GREATER BATON ROUGE AREA**

REFINERY

LARGEST
MANUFACTURING
EMPLOYER
IN LOUISIANA

4TH
LARGEST REFINERY
IN THE U.S.

CHEMICAL PLANT

2ND
LARGEST
MANUFACTURING
EMPLOYER
IN LOUISIANA

6.6 BILLION
POUNDS OF CHEMICAL
PRODUCTS
ANNUALLY

LUBRICANTS PLANT

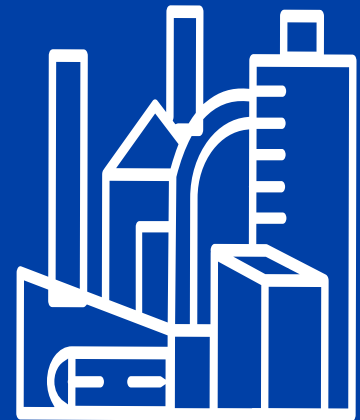
2.3 BILLION
POUNDS OF LUBRICANTS
PRODUCTS
ANNUALLY

POLYOLEFINS PLANT

2.5 BILLION
POUNDS OF HIGH-
DENSITY POLYETHYLENE
AND POLYPROPYLENE
PLASTICS
ANNUALLY

PLASTICS PLANT

1 BILLION
POUNDS OF
LOW-DENSITY
POLYETHYLENE
200 MILLION
POUNDS OF
ETHYLENE ELASTOMERS
ANNUALLY



ExxonMobil COMMUNITY IMPACT

ExxonMobil and its employees contributed nearly

\$5 MILLION

To Baton Rouge area nonprofit organizations and schools in 2015

ExxonMobil employees volunteer 40,000 hours with nonprofits and schools across the Capital Area, performing science and chemistry demonstrations, judging math and science nights and providing classroom tutoring.

\$1.5 MILLION in Matching Gifts

To higher education institutions like LSU & Southern University, as well as qualifying cultural non-profit organizations

Nearly **\$1.5 MILLION** to Capital Area United Way
No other company in the community generates as many local United Way contributions as ExxonMobil

\$1 MILLION in Community Grants

To nonprofits supporting educational, environmental and health organizations

\$760,000 in Volunteer Grants

Matching grants to nonprofits and schools, rewarding more than 40,000 volunteer hours of service